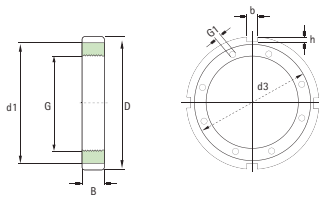


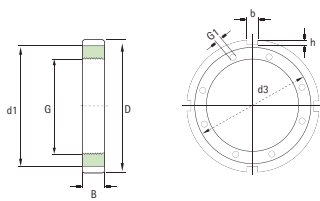
## Muttern / Bearing nuts

Artikelnr. Bearing No	Gewinde-Ø Thread-Ø	Dimensionen / Principal Dimensions								Gewicht kg Weight kg	U-Scheibe verzahnt Washer, toothed	Montageschraube Assembly Bolt
		B	D	d1	d2	b	h	G1	d3			
Serie KM / Series KM												
KM 20	M 100x2	18	130	120		10	4			0,7	MB 20	
KM 20 H	M 100x2	18	130	120		10	4	M 6	112	0,67	MB 20	AM 6x40
KM 20 HS	M 100x2	18	130	120		10	4	M 6	112	0,75	MB 20	AM 6x40
KM 21	M 105x2	18	140	126		12	5			0,85	MB 21	
KM 21 H	M 105x2	18	140	126		12	5	M 6	117	0,82	MB 21	AM 6x40
KM 21 HS	M 105x2	18	140	126		12	5	M 6	117	0,9	MB 21	AM 6x40
KM 22	M 110x2	19	145	133		12	5			0,97	MB 22	
KM 22 H	M 110x2	19	145	133		12	5	M 6	122	0,94	MB 22	AM 6x40
KM 22 HS	M 110x2	19	145	133		12	5	M 6	122	1,01	MB 22	AM 6x40
KM 23	M 115x2	19	150	137		12	5			1,01	MB 23	
KM 23 H	M 115x2	19	150	137		12	5	M 6	127	0,99	MB 23	AM 6x40
KM 23 HS	M 115x2	19	150	137		12	5	M 6	127	1,06	MB 23	AM 6x40
KML 24	M 120x2	20	145	135		12	5			0,78	MBL 24	
KM 24	M 120x2	20	155	138		12	5			1,08	MB 24	
KM 24 H	M 120x2	20	155	138		12	5	M 8	134	1,03	MB 24	AM 8x45
KM 24 HS	M 120x2	20	155	138		12	5	M 8	134	1,16	MB 24	AM 8x45
KM 25	M 125x2	21	160	148		12	5			1,19	MB 25	
KM 25 H	M 125x2	21	160	148		12	5	M 8	139	1,14	MB 25	AM 8x45
KM 25 HS	M 125x2	21	160	148		12	5	M 8	139	1,27	MB 25	AM 8x45
KML 26	M 130x2	21	155	145		12	5			0,88	MBL 26	
KM 26	M 130x2	21	165	149		12	5			1,25	MB 26	
KM 26 H	M 130x2	21	165	149		12	5	M 8	144	1,2	MB 26	AM 8x45
KM 26 HS	M 130x2	21	165	149		12	5	M 8	144	1,33	MB 26	AM 8x45
KM 27	M 135x2	22	175	160		14	6			1,55	MB 27	
KM 27 H	M 135x2	22	175	160		14	6	M 8	149	1,5	MB 27	AM 8x45
KM 27 HS	M 135x2	22	175	160		14	6	M 8	149	1,63	MB 27	AM 8x45
KML 28	M 140x2	22	165	155		12	5			0,99	MBL 28	
KM 28	M 140x2	22	180	160		14	6			1,56	MB 28	
KM 28 H	M 140x2	22	180	160		14	6	M 8	154	1,51	MB 28	AM 8x45
KM 28 HS	M 140x2	22	180	160		14	6	M 8	154	1,64	MB 28	AM 8x45
KM 29	M 145x2	24	190	171		14	6			1,8	MB 29	
KM 29 H	M 145x2	24	190	171		14	6	M 8	159	1,75	MB 29	AM 8x45
KM 29 HS	M 145x2	24	190	171		14	6	M 8	159	1,88	MB 29	AM 8x45
KML 30	M 150x2	24	180	170		14	5			1,38	MBL 30	
KM 30	M 150x2	24	195	171		14	6			2,03	MB 30	
KM 30 H	M 150x2	24	195	171		14	6	M 10	168	1,93	MB 30	AM 10x45
KM 30 HS	M 150x2	24	195	171		14	6	M 10	168	2,17	MB 30	AM 10x45
KM 31	M 155x3	25	200	182		16	7			2,3	MB 31	
KM 31 H	M 155x3	25	200	182		16	7	M 10	173	2,2	MB 31	AM 10x45
KM 31 HS	M 155x3	25	200	182		16	7	M 10	173	2,44	MB 31	AM 10x45
KML 32	M 160x3	25	190	189		14	5			1,56	MBL 32	
KML 32 H	M 160x3	25	190	189		14	5	M 8	174	1,5	MBL 32	AM 8x45
KML 32 HS	M 160x3	25	190	189		14	5	M 8	174	1,64	MBL 32	AM 8x45
KM 32	M 160x3	25	210	182		16	7			2,59	MB 32	
KM 32 H	M 160x3	25	210	182		16	7	M 10	178	2,49	MB 32	AM 10x45



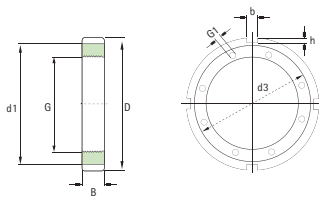
## Muttern / Bearing nuts

Artikelnr. Bearing No	Gewinde-Ø Thread-Ø	Dimensionen / Principal Dimensions								Gewicht kg Weight kg	U-Scheibe verzahnt Washer, toothed	Montageschraube Assembly Bolt
		B	D	d1	d2	b	h	G1	d3			
Serie KM / Series KM												
KM 32 HS	M 160x3	25	210	182		16	7	M 10	178	2,73	MB 32	AM 10x45
KM 33	M 165x3	26	210	193		16	7			2,7	MB 33	
KM 33 H	M 165x3	26	210	193		16	7	M 10	183	2,6	MB 33	AM 10x45
KM 33HS	M 165x3	26	210	193		16	7	M 10	138	2,84	MB 33	AM 10x45
KML 34	M 170x3	26	200	190		16	5			1,72	MBL 34	
KML 34 H	M 170x3	26	200	190		16	5	M 8	184	1,65	MBL 34	AM 8x45
KML 34 HS	M 170x3	26	200	190		16	5	M 8	184	1,79	MBL 34	AM 8x45
KM 34	M 170x3	26	220	193		16	7			2,8	MB 34	
KM 34 H	M 170x3	26	220	193		16	7	M 10	188	2,7	MB 34	AM 10x45
KM 34 HS	M 170x3	26	220	193		16	7	M 10	188	2,94	MB 34	AM 10x45
KML36	M 180x3	27	210	200		16	5			1,95	MBL 36	
KML 36 H	M 180x3	27	210	200		16	5	M 8	194	1,88	MBL 36	AM 8x45
KML 36 HS	M 180x3	27	210	200		16	5	M 8	194	2,02	MBL 36	AM 8x45
KM 36	M 180x3	27	230	203		18	8			3,07	MB 36	
KM 36 H	M 180x3	27	230	203		18	8	M 10	198	2,96	MB 36	AM 10x45
KM 36 HS	M 180x3	27	230	203		18	8	M 10	198	3,2	MB 36	AM 10x45
KML 38	M 190x3	28	220	210		16	5			2,08	MBL 38	
KML 38 H	M 190x3	28	220	210		16	5	M 8	204	2	MBL 38	AM 8x45
KML 38 HS	M 190x3	28	220	210		16	5	M 8	204	2,14	MBL 38	AM 8x45
KM 38	M 190x3	28	240	214		18	8			3,39	MB 38	
KM 38 H	M 190x3	28	240	214		18	8	M 10	208	3,28	MB 38	AM 10x45
KM 38 HS	M 190x3	28	240	214		18	8	M 10	208	3,52	MB 38	AM 10x45
KML 40	M 200x3	29	240	222		18	8			2,98	MBL 40	
KML 40 H	M 200x3	29	240	222		18	8	M 10	218	2,86	MBL 40	AM 10x45
KML 40 HS	M 200x3	29	240	222		18	8	M 10	218	3,1	MBL 40	AM 10x45
KM 40	M 200x3	29	250	226		18	8			3,69	MB 40	
KM 40 H	M 200x3	29	250	226		18	8	M 10	218	3,57	MB 40	AM 10x45
KM 40 HS	M 200x3	29	250	226		18	8	M 10	218	3,81	MB 40	AM 10x45



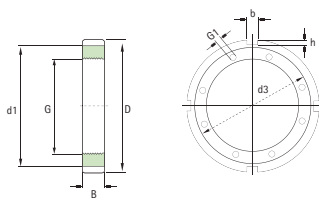
## Muttern / Bearing nuts

Artikelnr. Bearing No	Gewinde-Ø Thread-Ø	Dimensionen / Principal Dimensions								Gewicht kg Weight kg	U-Scheibe verzahnt Washer, toothed	Montageschraube Assembly Bolt
		B	D	d1	d2	b	h	G1	d3			
Serie HM / Series HM												
HML 41 T	Tr 205x4	30	250	232		18	8			3,43		
HMLL 42 T	Tr 210x4	26	250	234		18	8			2,9		
HM 42 T	Tr 210x4	30	270	238		20	10			4,75		
HM 42 TH	Tr 210x4	30	270	238		20	10	M 10	224	4,63		AM 10x45
HM 42 THS	Tr 210x4	30	270	238		20	10	M 10	224	4,87		AM 10x45
HML 43 T	Tr 215x4	30	260	242		20	9			3,72		
HM 3044	Tr 220x4	30	260	242	229	20	9			3,09	MS 3044	
HM 3044 H	Tr 220x4	30	260	242	229	20	9	M 10	236	2,97	MS 3044	AM 10x45
HM 3044 HS	Tr 220x4	30	260	242	229	20	9	M 10	236	3,21	MS 3044	AM 10x45
HM 3144	Tr 220x4	32	280	250	238	20	10			5,16	MS 3144	
HM 3144 H	Tr 220x4	32	280	250	238	20	10	M 16	246	4,82	MS 3144	AM 16x60
HM 3144 HS	Tr 220x4	32	280	250	238	20	10	M 16	246	5,64	MS 3144	AM 16x60
HM 44 T	Tr 220x4	32	280	250		20	10			5,35	MB 44	
HM 44 TH	Tr 220x4	32	280	250		20	10	M 12	237	5,16	MB 44	AM 12x60
HM 44 THS	Tr 220x4	32	280	250		20	10	M 12	237	5,63	MB 44	AM 12x60
HMLL 46 T	Tr 230x4	26	270	254		18	8			3,1		
HM 46 T	Tr 230x4	34	290	260		20	10			5,8		
HM 46 TH	Tr 230x4	34	290	260		20	10	M 12	248	5,6		AM 12x60
HM 46 THS	Tr 230x4	34	290	260		20	10	M 12	248	6,07		AM 12x60
HML 47 T	Tr 235x4	34	280	262		20	9			4,29		
HM 3048	Tr 240x4	34	290	270	253	20	10			5,16	MS 3048	
HM 3048 H	Tr 240x4	34	290	270	253	20	10	M 12	260	4,96	MS 3048	AM 12x60
HM 3048 HS	Tr 240x4	34	290	270	253	20	10	M 12	260	5,43	MS 3048	AM 12x60
HM 3148	Tr 240x4	34	300	270	258	20	10			5,91	MS 3148	
HM 3148 H	Tr 240x4	34	300	270	258	20	10	M 16	266	5,55	MS 3148	AM 16x60
HM 3148 HS	Tr 240x4	34	300	270	258	20	10	M 16	266	6,37	MS 3148	
HM 48 T	Tr 240x4	34	300	270		20	10			6,2	MB 48	
HM 48 TH	Tr 240x4	34	300	270		20	10	M 12	258	6,0	MB 48	
HM 48 THS	Tr 240x4	34	300	270		20	10	M 12	258	6,5	MB 48	
HMLL 50 T	Tr 250x4	26	290	274		18	8			3,4		
HM 50 T	Tr 250x4	35	320	290		20	10			7,0		
HM 50 TH	Tr 250x4	35	320	290		20	10	M 12	268	6,8		
HM 50 THS	Tr 250x4	35	320	290		20	10	M 12	268	7,3		
HML 52 T	Tr 260x4	30	310	290		20	10			5,15		
HM 3052	Tr 260x4	34	310	290	273	20	10			5,67	MS 3052	
HM 3052 H	Tr 260x4	34	310	290	273	20	10	M 12	280	5,47	MS 3052	
HM 3052 HS	Tr 260x4	34	310	290	273	20	10	M 12	280	5,94	MS 3052	
HM 52 T	Tr 260x4	35	330	300		24	12			8,4	MB 52	
HM 52 TH	Tr 260x4	35	330	300		24	12	M 12	278	8,2	MB 52	
HM 52 THS	Tr 260x4	35	330	300		24	12	M 12	278	8,7	MB 52	
HM 3152	Tr 260x4	36	330	300	281	24	12			7,99	MS 3152	
HM 3152 H	Tr 260x4	36	330	300	281	24	12	M 16	286	7,61	MS 3152	
HM 3152 HS	Tr 260x4	36	330	300	281	24	12	M 16	286	8,43	MS 3152	
HM 54 T	Tr 270x4	36	340	310		24	12			9,2		
HM 54 TH	Tr 270x4	36	340	310		24	12	M 12	288	9		



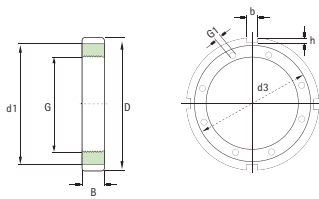
## Muttern / Bearing nuts

Artikelnr. Bearing No	Gewinde-Ø Thread-Ø	Dimensionen / Principal Dimensions								Gewicht kg Weight kg	U-Scheibe verzahnt Washer, toothed	Montageschraube Assembly Bolt
		B	D	d1	d2	b	h	G1	d3			
Serie HM / Series HM												
HM 54 THS	Tr 270x4	36	340	310		24	12	M 12	288	9,5		
HMLL 55 T	Tr 275x4	27	320	304		18	8			4,4		
HML56 T	Tr 280x4	30	330	310		24	10			5,49		
HM 56 T	Tr 280x4	36	350	320		24	12			9,6	MB 56	
HM 56 TH	Tr 280x4	36	350	320		24	12	M 12	298	9,4	MB 56	
HM 56 THS	Tr 280x4	36	350	320		24	12	M 12	298	9,9	MB 56	AM 12x60
HM 3056	Tr 280x4	38	330	310	293	24	10			6,78	MS 3056	
HM 3056 H	Tr 280x4	38	330	310	293	24	10	M 12	300	6,56	MS 3056	AM 12x60
HM 3056 HS	Tr 280x4	38	330	310	293	24	10	M 12	300	7,03	MS 3056	AM 12x60
HM 3156	Tr 280x4	38	330	320	301	24	12			8,99	MS 3156	
HM 3156 H	Tr 280x4	38	330	320	301	24	12	M 12	306	8,6	MS 3156	AM 16x60
HM 3156 HS	Tr 280x4	38	330	320	301	24	12	M 12	306	9,42	MS 3156	AM 16x60
HM 58 T	Tr 290x4	36	365	335		24	12			6,8		
HM 58 TH	Tr 290x4	36	365	335		24	12	M 12	308	6,6		AM 12x60
HM 58 THS	Tr 290x4	36	365	335		24	12	M 12	308	7		AM 12x60
HMLL 59 T	Tr 295x4	27	340	320		20	10			4,6		
HML 60 T	Tr 300x4	31	360	336		24	12			10,3		
HML 60 TH	Tr 300x4	31	360	336		24	12	M 12	317	10,1		AM 12x60
HML 60 THS	Tr 300x4	31	360	336		24	12	M 12	317	10,6		AM 12x60
HM 60 T	Tr 300x4	36	370	340		24	12			6,3		
HM 60 TH	Tr 300x4	36	370	340		24	12	M 12	318	6,2		AM 12x60
HM 60 THS	Tr 300x4	36	370	340		24	12	M 12	318	6,4		AM 12x60
HM 3060	Tr 300x4	42	360	336	316	24	12			9,62	MS 3060	
HM 3060 H	Tr 300x4	42	360	336	316	24	12	M 12	322	9,38	MS 3060	AM 12x60
HM 3060 HS	Tr 300x4	42	360	336	316	24	12	M 12	322	9,85	MS 3060	AM 12x60
HM 3160	Tr 300x4	40	380	340	326	24	12			11,7	MS 3160	
HM 3160 H	Tr 300x4	40	380	340	326	24	12	M 16	330	11,3	MS 3160	AM 16x60
HM 3160 HS	Tr 300x4	40	380	340	326	24	12	M 16	330	12,1	MS 3160	AM 16x60
HM 62 T	Tr 310x5	36	380	350		24	12			7,25		
HM 62 TH	Tr 310x5	36	380	350		24	12	M 12	328	7,1		AM 12x60
HM 3068	Tr 340x5	45	400	376	356	24	12			11,7	MS 3068	
HM 3068 H	Tr 340x5	45	400	376	356	24	12	M 12	362	11,4	MS 3068	AM 12x70
HM 3068 HS	Tr 340x5	45	400	376	356	24	12	M 12	362	12	MS 3068	AM 12x70
HM 3168	Tr 340x5	55	440	400	373	28	15			23	MS 3168	
HM 3168 H	Tr 340x5	55	440	400	373	28	15	M 20	374	22,1	MS 3168	AM 20x80
HM 3168 HS	Tr 340x5	55	440	400	373	28	15	M 20	374	23,9	MS 3168	AM 20x80
HML 69 T	Tr 345x5	33	410	384		28	13			9,51		
HML 69 TH	Tr 345x5	33	410	384		28	13	M 12	362	9,3		AM 12x60
HML 69 THS	Tr 345x5	33	410	384		28	13	M 12	362	9,8		AM 12x60
HM 70 T	Tr 350x5	42	430	400		28	15			15,4		
HM 70 TH	Tr 350x5	42	430	400		28	15	M 16	372	15		AM 16x60
HM 70 THS	Tr 350x5	42	430	400		28	15	M 16	372	15,9		AM 16x60
HMLL 71 T	Tr 355x5	28	410	386		24	12			6,9		
HMLL 71 TH	Tr 355x5	28	410	386		24	12	M 10	370	6,8		AM 10x45
HMLL 71 THS	Tr 355x5	28	410	386		24	12	M 10	370	7		AM 10x45



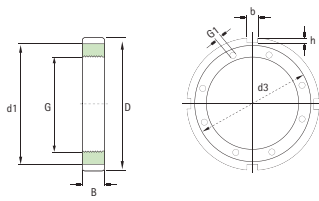
## Muttern / Bearing nuts

Artikelnr. Bearing No	Gewinde-Ø Thread-Ø	Dimensionen / Principal Dimensions								Gewicht kg Weight kg	U-Scheibe verzahnt Washer, toothed	Montageschraube Assembly Bolt
		B	D	d1	d2	b	h	G1	d3			
Serie HM / Series HM												
HML 72 T	Tr 360x5	35	420	394		28	13			10,2		
HML 72 TH	Tr 360x5	35	420	394		28	13	M 12	377	10		AM 12x60
HML 72 THS	Tr 360x5	35	420	394		28	13	M 12	377	10,5		AM 12x60
HM 72 T	Tr 360x5	45	440	410		28	15			16,5		
HM 72 TH	Tr 360x5	45	440	410		28	15	M 20	386	15,8		AM 20x80
HM 72 THS	Tr 360x5	45	440	410		28	15	M 20	386	17,6		AM 20x80
HM 3072	Tr 360x5	45	420	394	375	28	13			12	MS 3072	
HM 3072 H	Tr 360x5	45	420	394	375	28	13	M 12	382	11,7	MS 3072	AM 12x70
HM 3072 HS	Tr 360x5	45	420	394	375	28	13	M 12	382	12,3	MS 3072	AM 12x70
HM 3172	Tr 360x5	58	460	420	393	28	15			25	MS 3172	
HM 3172 H	Tr 360x5	58	460	420	393	28	15	M 20	394	24	MS 3172	AM 20x80
HM 3172 HS	Tr 360x5	58	460	420	393	28	15	M 20	394	25,8	MS 3172	AM 20x80
HML 73 T	Tr 365x5	35	430	404		28	13			10,7		
HML 73 TH	Tr 365x5	35	430	404		28	13	M 12	382	10,5		AM 12x60
HML 73 THS	Tr 365x5	35	430	404		28	13	M 12	382	11		AM 12x60
HM 74 T	Tr 370x5	45	450	420		28	15			17,4		
HM 74 TH	Tr 370x5	45	450	420		28	15	M 20	396	16,7		AM 20x80
HM 74 THS	Tr 370x5	45	450	420		28	15	M 20	396	18,5		AM 20x80
HMLL 75 T	Tr 375x5	28	430	406		24	12			7,3		
HMLL 75 TH	Tr 375x5	28	430	406		24	12	M 10	390	7,2		AM 10x45
HMLL 75 THS	Tr 375x5	28	430	406		24	12	M 10	390	7,4		AM 10x45
HML 76 T	Tr 380x5	37	445	417		28	14			11,3		
HML 76 TH	Tr 380x5	37	445	417		28	14	M 12	397	11,1		AM 12x60
HML 76 THS	Tr 380x5	37	445	417		28	14	M 12	397	11,6		AM 12x60
HM 76 T	Tr 380x5	45	470	430		30	18			20,2		
HM 76 TH	Tr 380x5	45	470	430		30	18	M 20	406	19,5		AM 20x80
HM 76 THS	Tr 380x5	45	470	430		30	18	M 20	406	21,3		AM 20x80
HM 3076	Tr 380x5	48	450	422	399	28	14			14,9	MS 3076	
HM 3076 H	Tr 380x5	48	450	422	399	28	14	M 16	406	14,4	MS 3076	AM 16x70
HM 3076 HS	Tr 380x5	48	450	422	399	28	14	M 16	406	15,3	MS 3076	AM 16x70
HM 3176	Tr 380x5	60	490	440	415	32	18			30,8	MS 3176	
HM 3176 H	Tr 380x5	60	490	440	415	32	18	M 20	416	29,8	MS 3176	AM 20x80
HM 3176 HS	Tr 380x5	60	490	440	415	32	18	M 20	416	31,6	MS 3176	AM 20x80
HML 77 T	Tr 385x5	37	450	422		28	14			11,8		
HML 77 TH	Tr 385x5	37	450	422		28	14	M 12	402	11,6		AM 12x60
HM 3148 HS	Tr 240x4	34	300	270	258	20	10	M 16	266	6,37	MS 3148	
HM 48 T	Tr 240x4	34	300	270		20	10			6,2	MB 48	
HM 48 TH	Tr 240x4	34	300	270		20	10	M 12	258	6,0	MB 48	
HM 48 THS	Tr 240x4	34	300	270		20	10	M 12	258	6,5	MB 48	
HMLL 50 T	Tr 250x4	26	290	274		18	8			3,4		
HM 50 T	Tr 250x4	35	320	290		20	10			7,0		
HM 50 TH	Tr 250x4	35	320	290		20	10	M 12	268	6,8		
HM 50 THS	Tr 250x4	35	320	290		20	10	M 12	268	7,3		
HML 52 T	Tr 260x4	30	310	290		20	10			5,15		
HM 3052	Tr 260x4	34	310	290	273	20	10			5,67	MS 3052	



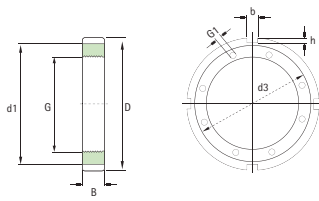
## Muttern / Bearing nuts

Artikelnr. Bearing No	Gewinde-Ø Thread-Ø	Dimensionen / Principal Dimensions								Gewicht kg Weight kg	U-Scheibe verzahnt Washer, toothed	Montageschraube Assembly Bolt
		B	D	d1	d2	b	h	G1	d3			
Serie KM / Series KM												
HM 3052 H	Tr 260x4	34	310	290	273	20	10	M 12	280	5,47	MS 3052	
HM 3052 HS	Tr 260x4	34	310	290	273	20	10	M 12	280	5,94	MS 3052	
HM 52 T	Tr 260x4	35	330	300		24	12			8,4	MB 52	
HM 52 TH	Tr 260x4	35	330	300		24	12	M 12	278	8,2	MB 52	
HM 52 THS	Tr 260x4	35	330	300		24	12	M 12	278	8,7	MB 52	
HM 3152	Tr 260x4	36	330	300	281	24	12			7,99	MS 3152	
HM 3152 H	Tr 260x4	36	330	300	281	24	12	M 16	286	7,61	MS 3152	
HM 3152 HS	Tr 260x4	36	330	300	281	24	12	M 16	286	8,43	MS 3152	
HM 54 T	Tr 270x4	36	340	310		24	12			9,2		
HM 54 TH	Tr 270x4	36	340	310		24	12	M 12	288	9		
HM 54 THS	Tr 270x4	36	340	310		24	12	M 12	288	9,5		
HMLL 55 T	Tr 275x4	27	320	304		18	8			4,4		
HML56 T	Tr 280x4	30	330	310		24	10			5,49		
HM 56 T	Tr 280x4	36	350	320		24	12			9,6	MB 56	
HM 56 TH	Tr 280x4	36	350	320		24	12	M 12	298	9,4	MB 56	
HM 3184	Tr 420x5	70	540	490	460	32	18			43,3	MS 3184	
HM 3184 H	Tr 420x5	70	540	490	460	32	18	M 24	466	41,6	MS 3184	AM 24x100
HM 3184 HS	Tr 420x5	70	540	490	460	32	18	M 24	466	44,9	MS 3184	AM 24x100
HML 86 T	Tr 430x5	41	500	472		32	14			15,8		
HML 86 TH	Tr 430x5	41	500	472		32	14	M 12	447	15,6		AM 12x70
HM 86 THS	Tr 430x5	41	500	472		32	14	M 12	447	16,1		AM 12x70
HMLL 87 T	Tr 435x5	30	500	474		28	13			10,7		
HMLL 87 TH	Tr 435x5	30	500	474		28	13	M 12	452	10,5		AM 12x60
HMLL 87 THS	Tr 435x5	30	500	474		28	13	M 12	452	11		AM 12x60
HM 88 T	Tr 440x5	51	540	500		36	20			28,8		
HM 88 TH	Tr 440x5	51	540	500		36	20	M 20	446	28		AM 20x100
HM 88 THS	Tr 440x5	51	540	500	500	36	20	M 20	446	30,1		AM 20x100
HM 3088	Tr 440x5	60	520	490	463	32	15			26,2	MS 3088	
HM 3088 H	Tr 440x5	60	520	490	463	32	15	M 16	468	25,6	MS 3088	AM 16x90
HM 3088 HS	Tr 440x5	60	520	490	463	32	15	M 16	468	26,7	MS 3088	AM 16x90
HM 3188	Tr 440x5	70	560	510	478	36	20			45,1	MS 3188	
HM 3188 H	Tr 440x5	70	560	510	478	36	20	M 24	485	43,4	MS 3188	AM 24x100
HM 3188 HS	Tr 440x5	70	560	510	478	36	20	M 24	485	46,7	MS 3188	AM 24x100
HML 90 T	Tr 450x5	41	520	490		32	15			16,3		
HML 90 TH	Tr 450x5	41	520	490		32	15	M 12	467	16,1		AM 12x70
HML 90 THS	Tr 450x5	41	520	490		32	15	M 12	467	16,6		AM 12x70
HMLL 92 T	Tr 460x5	33	530	504		28	13			13,5		
HMLL 92 TH	Tr 460x5	33	530	504		28	13	M 12	478	13,3		AM 12x60
HMLL 92 THS	Tr 460x5	33	530	504		28	13	M 12	478	13,8		AM 12x60
HM 92 T	Tr 460x5	53	550	510		36	20			28,8		
HM 92 TH	Tr 460x5	53	550	510		36	20	M 20	486	27,9		AM 20x100
HM 92 THS	Tr 460x5	53	550	510		36	20	M 20	486	30		AM 20x100
HM 3092	Tr 460x5	60	540	510	483	32	15			27	MS 3092	
HM 3092 H	Tr 460x5	60	540	510	483	32	15	M 16	488	26,4	MS 3092	AM 16x90
HM 3092 HS	Tr 460x5	60	540	510	483	32	15	M 16	488	27,5	MS 3092	AM 16x90



## Muttern / Bearing nuts

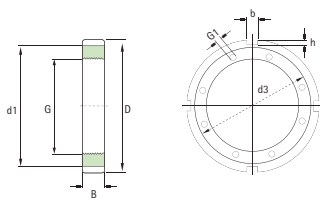
Artikelnr. Bearing No	Gewinde-Ø Thread-Ø	Dimensionen / Principal Dimensions								Gewicht kg Weight kg	U-Scheibe verzahnt Washer, toothed	Montageschraube Assembly Bolt
		B	D	d1	d2	b	h	G1	d3			
Serie HM / Series HM												
HM 3192	Tr 460x5	75	580	540	498	36	20			50,2	MS 3192	
HM 3192 H	Tr 460x5	75	580	540	498	36	20	M 24	506	48,4	MS 3192	AM 24x100
HM 3192 HS	Tr 460x5	75	580	540	498	36	20	M 24	506	51,7	MS 3192	AM 24x100
HML 94 T	Tr 470x5	43	540	510		32	15			18,3		
HML 94 TH	Tr 470x5	43	540	510		32	15	M 12	487	18,1		AM 12x70
HML 94 THS	Tr 470x5	43	540	510		32	15	M 12	487	18,6		AM 12x70
HMLL 96 T	Tr 480x5	33	550	522		33	14			13,9		
HMLL 96 TH	Tr 480x5	33	550	522		33	14	M 12	498	13,9		AM 12x60
HMLL 96 THS	Tr 480x5	33	550	522		33	14	M 12	498	13,9		AM 12x60
HM 96 T	Tr 480x5	56	590	590		56	20			37,5		
HM 96 TH	Tr 480x5	56	590	590		56	20	M 20	506	36,6		AM 20x100
HM 96 THS	Tr 480x5	56	590	590		56	20	M 20	506	38,7		AM 20x100
HM 3096	Tr 480x5	60	560	530	503	36	15			28,3	MS 3096	
HM 3096 H	Tr 480x5	60	560	530	503	36	15	M 16	508	27,7	MS 3096	AM 16x90
HM 3096 HS	Tr 480x5	60	560	530	503	36	15	M 16	508	28,8	MS 3096	AM 16x90
HM 3196	Tr 480x5	75	620	560	528	36	20			62	MS 3196	
HM 3196 H	Tr 480x5	75	620	560	528	36	20	M 24	526	60,2	MS 3196	AM 24x100
HM 3196 HS	Tr 480x5	75	620	560	528	36	20	M 24	526	63,5	MS 3196	AM 24x100
HM 98 T	Tr 490x5	45	570	540		36	15			22,5		
HML 98 TH	Tr 490x5	45	570	540		36	15	M 12	507	22,2		AM 12x70
HML 98 THS	Tr 490x5	45	570	540		36	15	M 12	507	22,7		AM 12x70
HMLL 100 T	Tr 500x5	37	575	547		32	15			17,6		
HMLL 100 TH	Tr 500x5	37	575	547		32	15	M 12	518	17,4		AM 12x60
HMLL 100 THS	Tr 500x5	37	575	547		32	15	M 12	518	17,9		AM 12x60
HM 30/500	Tr 500x5	68	580	550	523	36	15			33,6	MS 30/500	
HM 30/500 H	Tr 500x5	68	580	550	523	36	15	M 16	530	32,9	MS 30/500	AM 16x90
HM 30/500 HS	Tr 500x5	68	580	550	523	36	15	M 16	530	34	MS 30/500	AM 16x90
HM 31/500	Tr 500x5	80	630	580	540	40	23			63,1	MS 31/500	
HM 31/500 H	Tr 500x5	80	630	580	540	40	23	M 24	546	61,2	MS 31/500	AM 24x100
HM 31/500 HS	Tr 500x5	80	630	580	540	40	23	M 24	546	64,5	MS 31/500	AM 24x100
HM 102 T	Tr 510x6	58	620	570		40	23			41,2		
HM 102 TH	Tr 510x6	58	620	570		40	23	M 20	536	40,2		AM 20x100
HM 102 THS	Tr 510x6	58	620	570		40	23	M 20	536	42,3		AM 20x100
HMLL 104 T	Tr 520x6	42	595	565		32	15			20,8		
HMLL 104 TH	Tr 520x6	42	595	565		32	15	M 12	538	20,6		AM 12x70
HMLL 104 THS	Tr 520x6	42	595	565		32	15	M 12	538	21,1		AM 12x70
HML 104 T	Tr 520x6	47	600	570		36	15			25,3		
HML 104 TH	Tr 520x6	47	600	570		36	15	M 12	537	25		AM 12x70
HML 104 THS	Tr 520x6	47	600	570		36	15	M 12	537	25,5		AM 12x70
HM 106 T	Tr 530x6	60	640	590		40	23			44,2		
HM 106 TH	Tr 530x6	60	640	590		40	23	M 24	562	42,8		AM 24x100
HM 106 THS	Tr 530x6	60	640	590		40	23	M 24	562	46,1		AM 24x100
HM 30/530	Tr 530x6	75	630	590	558	40	20			42,8	MS 30/530	
HM 30/530 H	Tr 530x6	75	630	590	558	40	20	M 16	559	42,1	MS 30/530	AM 16x90
HM 30/530 HS	Tr 530x6	75	630	590	558	40	20	M 16	559	43,3	MS 30/530	AM 16x90



## Muttern / Bearing nuts

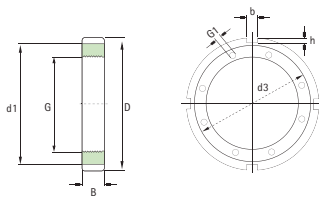
Artikelnr. Bearing No	Gewinde-Ø Thread-Ø	Dimensionen / Principal Dimensions								Gewicht kg Weight kg	U-Scheibe verzahnt Washer, toothed	Montageschraube Assembly Bolt	
		B	D	d1	d2	b	h	G1	d3				
Serie HM / Series HM													
HM 3192	Tr 460x5	75	580	540	498	36	20				50,2	MS 3192	
HM 3192 H	Tr 460x5	75	580	540	498	36	20	M 24	506	48,4	MS 3192	AM 24x100	
HM 3192 HS	Tr 460x5	75	580	540	498	36	20	M 24	506	51,7	MS 3192	AM 24x100	
HML 94 T	Tr 470x5	43	540	510		32	15				18,3		
HML 94 TH	Tr 470x5	43	540	510		32	15	M 12	487	18,1		AM 12x70	
HML 94 THS	Tr 470x5	43	540	510		32	15	M 12	487	18,6		AM 12x70	
HMLL 96 T	Tr 480x5	33	550	522		33	14				13,9		
HMLL 96 TH	Tr 480x5	33	550	522		33	14	M 12	498	13,9		AM 12x60	
HMLL 96 THS	Tr 480x5	33	550	522		33	14	M 12	498	13,9		AM 12x60	
HM 96 T	Tr 480x5	56	590	590		56	20				37,5		
HM 96 TH	Tr 480x5	56	590	590		56	20	M 20	506	36,6		AM 20x100	
HM 96 THS	Tr 480x5	56	590	590		56	20	M 20	506	38,7		AM 20x100	
HM 3096	Tr 480x5	60	560	530	503	36	15				28,3	MS 3096	
HM 3096 H	Tr 480x5	60	560	530	503	36	15	M 16	508	27,7	MS 3096	AM 16x90	
HM 3096 HS	Tr 480x5	60	560	530	503	36	15	M 16	508	28,8	MS 3096	AM 16x90	
HM 3196	Tr 480x5	75	620	560	528	36	20				62	MS 3196	
HM 3196 H	Tr 480x5	75	620	560	528	36	20	M 24	526	60,2	MS 3196	AM 24x100	
HM 3196 HS	Tr 480x5	75	620	560	528	36	20	M 24	526	63,5	MS 3196	AM 24x100	
HM 98 T	Tr 490x5	45	570	540		36	15				22,5		
HML 98 TH	Tr 490x5	45	570	540		36	15	M 12	507	22,2		AM 12x70	
HML 98 THS	Tr 490x5	45	570	540		36	15	M 12	507	22,7		AM 12x70	
HMLL 100 T	Tr 500x5	37	575	547		32	15				17,6		
HMLL 100 TH	Tr 500x5	37	575	547		32	15	M 12	518	17,4		AM 12x60	
HMLL 100 THS	Tr 500x5	37	575	547		32	15	M 12	518	17,9		AM 12x60	
HM 30/500	Tr 500x5	68	580	550	523	36	15				33,6	MS 30/500	
HM 30/500 H	Tr 500x5	68	580	550	523	36	15	M 16	530	32,9	MS 30/500	AM 16x90	
HM 30/500 HS	Tr 500x5	68	580	550	523	36	15	M 16	530	34	MS 30/500	AM 16x90	
HM 31/500	Tr 500x5	80	630	580	540	40	23				63,1	MS 31/500	
HM 31/500 H	Tr 500x5	80	630	580	540	40	23	M 24	546	61,2	MS 31/500	AM 24x100	
HM 31/500 HS	Tr 500x5	80	630	580	540	40	23	M 24	546	64,5	MS 31/500	AM 24x100	
HM 102 T	Tr 510x6	58	620	570		40	23				41,2		
HM 102 TH	Tr 510x6	58	620	570		40	23	M 20	536	40,2		AM 20x100	
HM 102 THS	Tr 510x6	58	620	570		40	23	M 20	536	42,3		AM 20x100	
HMLL 104 T	Tr 520x6	42	595	565		32	15				20,8		
HMLL 104 TH	Tr 520x6	42	595	565		32	15	M 12	538	20,6		AM 12x70	
HMLL 104 THS	Tr 520x6	42	595	565		32	15	M 12	538	21,1		AM 12x70	
HML 104 T	Tr 520x6	47	600	570		36	15				25,3		
HML 104 TH	Tr 520x6	47	600	570		36	15	M 12	537	25		AM 12x70	
HML 104 THS	Tr 520x6	47	600	570		36	15	M 12	537	25,5		AM 12x70	
HM 106 T	Tr 530x6	60	640	590		40	23				44,2		
HM 106 TH	Tr 530x6	60	640	590		40	23	M 24	562	42,8		AM 24x100	
HM 106 THS	Tr 530x6	60	640	590		40	23	M 24	562	46,1		AM 24x100	
HM 30/530	Tr 530x6	75	630	590	558	40	20				42,8	MS 30/530	
HM 30/530 H	Tr 530x6	75	630	590	558	40	20	M 16	559	42,1	MS 30/530	AM 16x90	
HM 30/530 HS	Tr 530x6	75	630	590	558	40	20	M 16	559	43,3	MS 30/530	AM 16x90	





## Muttern / Bearing nuts

Artikelnr. Bearing No	Gewinde-Ø Thread-Ø	Dimensionen / Principal Dimensions								Gewicht kg Weight kg	U-Scheibe verzahnt Washer, toothed	Montageschraube Assembly Bolt
		B	D	d1	d2	b	h	G1	d3			
Serie HM / Series HM												
HM 30/630	Tr 630x6	75	730	690	658	45	20			56	MS 30/630	
HM 30/630 H	Tr 630x6	75	730	690	658	45	20	M 20	665	54,8	MS 30/630	AM 20x100
HM 30/630 HS	Tr 630x6	75	730	690	658	45	20	M 20	665	56,9	MS 30/630	AM 20x100
HM 31/630	Tr 630x6	95	800	730	685	50	28			127	MS 31/630	
HM 31/630 H	Tr 630x6	95	800	730	685	50	28	M 24	680	125	MS 31/630	AM 24x100
HM 31/630 HS	Tr 630x6	95	800	730	685	50	28	M 24	680	129	MS 31/630	AM 24x100
HM 130 T	Tr 650x6	67	780	720		45	25			70,9		
HM 130 TH	Tr 650x6	67	780	720		45	25	M 24	682	69,3		AM 24x100
HM 130 THS	Tr 650x6	67	780	720		45	25	M 24	682	72,6		AM 24x100
HMLL 131 T	Tr 655x6	52	745	715		36	15			39,5		
HMLL 131 TH	Tr 655x6	52	745	715		36	15	M 16	679	38,9		AM 16x90
HMLL 131 THS	Tr 655x6	52	745	715		36	15	M 16	679	40		AM 16x90
HML 134 T	Tr 670x6	70	770	730		45	20			59,8		
HML 134 TH	Tr 670x6	70	770	730		45	20	M 16	692	59,1		AM 16x90
HML 134 THS	Tr 670x6	70	770	730		45	20	M 16	692	60,2		AM 16x90
HM 30/670	Tr 670x6	80	780	740	703	45	20			71,5	MS 30/670	
HM 30/670 H	Tr 670x6	80	780	740	703	45	20	M 20	704	70,2	MS 30/670	AM 20x100
HM 30/670 HS	Tr 670x6	80	780	740	703	45	20	M 20	704	72,3	MS 30/670	AM 20x100
HM 31/670	Tr 670x6	106	850	775	730	50	28			162	MS 31/670	
HM 31/670 H	Tr 670x6	106	850	775	730	50	28	M 24	720	160	MS 31/670	AM 24x140
HM 31/670 HS	Tr 670x6	106	850	775	730	50	28	M 24	720	164	MS 31/670	AM 24x140
HM 136 T	Tr 680x6	72	820	750		50	28			84,8		
HM 136 TH	Tr 680x6	72	820	750		50	28	M 24	712	83,1		AM 24x100
HM 136 THS	Tr 680x6	72	820	750		50	28	M 24	712	86,4		AM 24x100
HMLL 139 T	Tr 695x6	53	795	755		40	20			46,4		
HMLL 139 TH	Tr 695x6	53	795	755		40	20	M 16	719	45,8		AM 16x90
HMLL 139 THS	Tr 695x6	53	795	755		40	20	M 16	719	46,9		AM 16x90
HML 142 T	Tr 710x7	70	830	780		50	25			75,7		
HML 142 TH	Tr 710x7	70	830	780		50	25	M 20	738	74,5		AM 20x100
HML 142 THS	Tr 710x7	70	830	780		50	25	M 20	738	76,6		AM 20x100
HM 30/710	Tr 710x7	90	830	780	742	50	25			90,7	MS 30/710	
HM 30/710 H	Tr 710x7	90	830	780	742	50	25	M 24	750	88,6	MS 30/710	AM 24x120
HM 30/710 HS	Tr 710x7	90	830	780	742	50	25	M 24	750	92,4	MS 30/710	AM 24x120
HM 31/710	Tr 710x7	106	900	825	772	55	30			180	MS 31/710	
HM 31/710 H	Tr 710x7	106	900	825	772	55	30	M 24	760	178	MS 31/710	AM 24x140
HM 31/710 HS	Tr 710x7	106	900	825	772	55	30	M 24	760	182	MS 31/710	AM 24x140
HM 144 T	Tr 720x7	72	870	800		50	28			97,8		
HM 144 TH	Tr 720x7	72	870	800		50	28	M 24	752	96,1		AM 24x100
HM 144 THS	Tr 720x7	72	870	800		50	28	M 24	752	99,4		AM 24x100
HMLL 148 T	Tr 740x7	55	840	800		40	20			51,5		
HMLL 148 TH	Tr 740x7	55	840	800		40	20	M 16	764	50,9		AM 16x90
HMLL 148 THS	Tr 740x7	55	840	800		40	20	M 16	764	52		AM 16x90
HML 150 T	Tr 750x7	70	870	820		55	25			79,6		
HML 150 TH	Tr 750x7	70	870	820		55	25	M 20	778	78,4		AM 20x100
HML 150 THS	Tr 750x7	70	870	820		55	25	M 20	778	80,5		AM 20x100



## Muttern / Bearing nuts

Artikelnr. Bearing No	Gewinde-Ø Thread-Ø	Dimensionen / Principal Dimensions								Gewicht kg Weight kg	U-Scheibe verzahnt Washer, toothed	Montageschraube Assembly Bolt
		B	D	d1	d2	b	h	G1	d3			
Serie HM / Series HM												
HM 30/750	Tr 750x7	90	870	820	782	55	25			95,1	MS 30/750	
HM 30/750 H	Tr 750x7	90	870	820	782	55	25	M 24	790	93	MS 30/750	AM 24x120
HM 30/750 HS	Tr 750x7	90	870	820	782	55	25	M 24	790	96,8	MS 30/750	AM 24x120
HM 31/750	Tr 750x7	112	950	875	813	60	34			208	MS 31/750	
HM 31/750 H	Tr 750x7	112	950	875	813	60	34	M 24	800	205	MS 31/750	AM 24x140
HM 31/750 HS	Tr 750x7	112	950	875	813	60	34	M 24	880	210	MS 31/750	AM 24x140
HM 152 T	Tr 760x7	75	910	830		55	30			104		
HM 152 TH	Tr 760x7	75	910	830		55	30	M 24	792	102		AM 24x100
HM 152 THS	Tr 760x7	75	910	830		55	30	M 24	792	105		AM 24x100
HMLL 156 T	Tr 780x7	56	880	840		40	20			55,2		
HMLL 156 TH	Tr 760x7	56	880	840		40	20	M 16	804	54,2		AM 16x90
HMLL 156 THS	Tr 760x7	56	880	840		40	20	M 16	804	55,7		AM 16x90
HML 160 T	Tr 800x7	70	920	865		55	25			84		
HML 160 TH	Tr 800x7	70	920	865		55	25	M 20	828	82,4		AM 20x100
HML 160 THS	Tr 800x7	70	920	865		55	25	M 20	828	84,9		AM 20x100
HM 160 T	Tr 800x7	75	950	870		60	34			109		
HM 160 TH	Tr 800x7	75	950	870		60	34	M 20	832	107		AM 20x100
HM 160 THS	Tr 800x7	75	950	870		60	34	M 20	832	110		AM 20x100
HM 30/800	Tr 800x7	90	920	870	832	55	25			102	MS 30/800	
HM 30/800 H	Tr 800x7	90	920	870	832	55	25	M 24	840	100	MS 30/800	AM 24x120
HM 30/800 HS	Tr 800x7	90	920	870	832	55	25	M 24	840	104	MS 30/800	AM 24x120
HM 31/800	Tr 800x7	112	1000	925	863	60	34			221	MS 31/800	
HM 31/800 H	Tr 800x7	112	1000	925	863	60	34	M 24	850	218	MS 31/800	AM 24x140
HM 31/800 HS	Tr 800x7	112	1000	925	863	60	34	M 24	850	223	MS 31/800	AM 24x140
HMLL 166 T	Tr 830x7	57	930	890		40	20			59,7		
HMLL 166 TH	Tr 830x7	57	930	890		40	20	M 16	854	59,1		AM 16x90
HMLL 166 THS	Tr 830x7	57	930	890		40	20	M 16	854	60,2		AM 16x90
HML 170 T	Tr 850x7	74	970	915		60	25			94		
HML 170 TH	Tr 850x7	74	970	915		60	25	M 20	880	92,8		AM 20x100
HML 170 THS	Tr 850x7	74	970	915		60	25	M 20	880	94		AM 20x100
HM 170 T	Tr 850x7	79	1010	930		60	34			131		
HM 170 TH	Tr 850x7	79	1010	930		60	34	M 24	882	129		AM 20x100
HM 170 THS	Tr 850x7	79	1010	930		60	34	M 24	882	132		AM 20x100
HM 30/850	Tr 850x7	90	980	925	887	60	25			118	MS 30/850	
HM 30/850 H	Tr 850x7	90	980	925	887	60	25	M 24	890	116	MS 30/850	AM 24x120
HM 30/850 HS	Tr 850x7	90	980	925	887	60	25	M 24	890	120	MS 30/850	AM 24x120
HM 31/850	Tr 850x7	118	1060	975	914	70	38			254	MS 31/850	
HM 31/850 H	Tr 850x7	118	1060	975	914	70	38	M 24	900	251	MS 31/850	AM 24x140
HM 31/850 HS	Tr 850x7	118	1060	975	914	70	38	M 24	900	256	MS 31/850	AM 24x140